

## How to Bid in a Simultaneous Auction

For an explanation of the different screen areas see the “Simultaneous Auction Screen Overview” guide. If you are unsure of any terms in this guide, please check the Glossary.

There are three methods that can be used to Bid in a Simultaneous Auction:

- a. Manually while the Auction is in progress
- b. Limit Bids before the Auction commences
- c. Auto Bids while the Auction is in progress

**Regardless of the method used to Bid, once a Bid has been placed in an Auction it cannot be retracted.**



When you are **Holding a Lot**, the Lot will have a yellow background, green font and a green tick.



When you have **lost a Lot**, the background will return to grey, the font will be red and there will be an exclamation mark.

### Manual Bidding

In the Auction Area, click on the **Lot Number** that you wish to place a Bid on.

Lot 001 \$900.00	Lot 002 \$900.00	Lot 003 \$850.00	Lot 004 \$850.00	Lot 005 \$835.00	Lot 006 \$760.00
Lot 011 \$380.00 <small>near reserve</small>	Lot 012 \$450.00	Lot 013 \$460.00	Lot 014 \$450.00	Lot 015 \$730.00	Lot 016 \$740.00 <small>near reserve</small>
Lot 021 \$320.00	Lot 022 \$710.00	Lot 023 \$1280.00	Lot 024 \$980.00	Lot 025 \$750.00	Lot 026 \$750.00
Lot 031	Lot 032	Lot 033	Lot 034	Lot 035	Lot 036

This Lot now becomes your Active Lot in the Bidding and Lot Information Areas.

In the Bidding Area, click on any one of the **Bid** buttons for the price you wish to Bid. Each button is a multiple of the Bid Increment. This increment can be different for each Lot. The Bid Increment for each lot is displayed next to the Lot Number in the Bidding Area.

Lot 014      Increment \$5.00/Head

Current Price  
**\$450.00**

Bid Type:  
\$/Head

**Bid x 1**  
\$455.00

**Bid x 2**  
\$460.00

**Bid x 5**  
\$475.00

Or, Auto Bid to:

If the Lot is offered with multiple Bid Types, the Bid Type can be changed by clicking on the drop-down box under Bid Type.

Bid Type:

\$/Head

\$/Head

c/kg Live

c/kg Dressed

The prices on the Bid buttons will update automatically to reflect the equivalent price based on your selected Bid Type.

## Limit Bids

Limit Bids can be placed on any Lot in the Auction and must be entered before the Auction commences. Limit Bids can be entered, modified or deleted up to 30 minutes before an Auction starts.

Limit Bids are entered, modified or deleted via the Auctions & Catalogues page.

Click on **Enter Limit Bid** in the Limit Bids column next to the appropriate Auction.

UPCOMING AUCTIONS				Catalogue	Limit Bids	Started
Sheep	368	ROBERTS SHEEP	🕒 10/02/11 09:00	➔ View	➔ Enter Limit Bid	

Type in your maximum price for the particular Lot(s) in the **Limit in your Bid Type** column

LotID	Description	Bid Type	Limit in your Bid Type	\$/Head equivalent Price
Lot 300	141 LMH 56.6 kg Live 26.6 kg Dressed	\$/Head	110.00	110.00 \$/Head
Lot 301	254 LMH 49.4 kg Live 21.7 kg Dressed	\$/Head		\$/Head

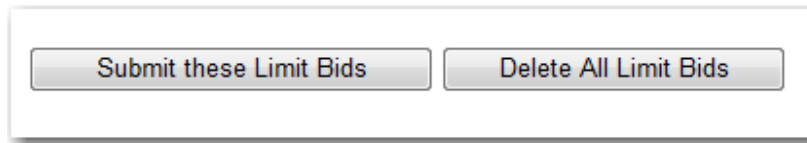
If the Lot(s) are offered with multiple Bid Types, you can change the way you enter the Limit Bid by clicking on the drop-down box under **Bid Type**.

Lot 302	290 LMH 47.1 kg Live 21.7 kg Dressed	c/kg Dressed		\$/Head
Lot 303	1000 LMH 46.9 kg Live 21.3 kg Dressed	\$/Head		\$/Head

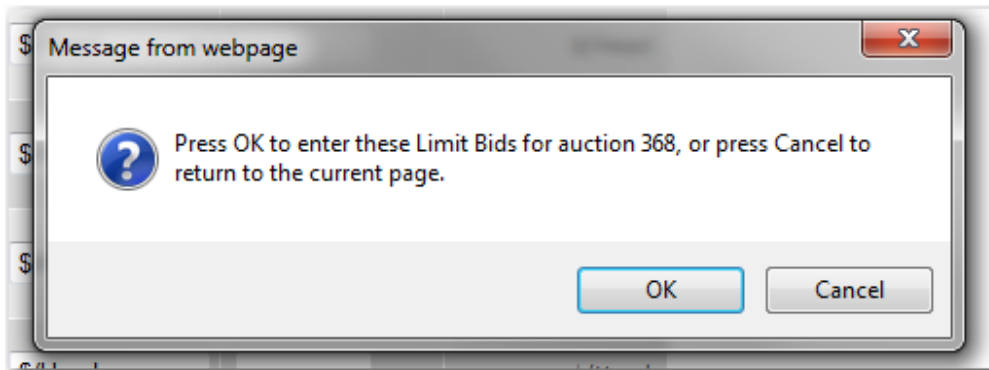
The \$/Head equivalent price will be automatically calculated.

Lot 302	290 LMH 47.1 kg Live 21.7 kg Dressed	c/kg Dressed	500.00	108.50 \$/Head
---------	--	--------------	--------	----------------

Scroll to the bottom of the screen and then click on either **Submit these Limit Bids** or **Delete All Limit Bids**.



If you submit the Limit Bids, you will need to confirm them.



Once you have confirmed your Limit Bids, you will be taken to a summary page that you can print.

Lot	Description	Your Limit	Your bid type	\$/Head Equivalent
300	141 LMH	110.00	\$/Head	110.00
301	254 LMH		\$/Head	
302	290 LMH	500.00	c/kg Dressed	108.50
303	1000 LMH		\$/Head	
304	79 LMH		\$/Head	

Any Limit Bids will remain active until the limit is reached, the Lot is finalised or if you login to and then exit the Auction.

If you login to an Auction and then exit before the Auction concludes, you will be prompted as to whether or not you want to keep your Limit Bids active.

**Warning before exit - Do you want to keep Limit Bids?**

Do you want to keep the below Limit Bids?

Lot No	Lot Status	Current Price	Holding	Limit Bid	Keep Limit Bid?
001	AVA	\$800.00	Yes	\$1,000.00	<input checked="" type="checkbox"/>
002	AVA	\$3,000.00	Yes	\$4,000.00	<input checked="" type="checkbox"/>
003	AVA	\$10,200.00	Yes	\$15,000.00	<input checked="" type="checkbox"/>
004	AVA	\$6,500.00	Yes	\$7,000.00	<input checked="" type="checkbox"/>

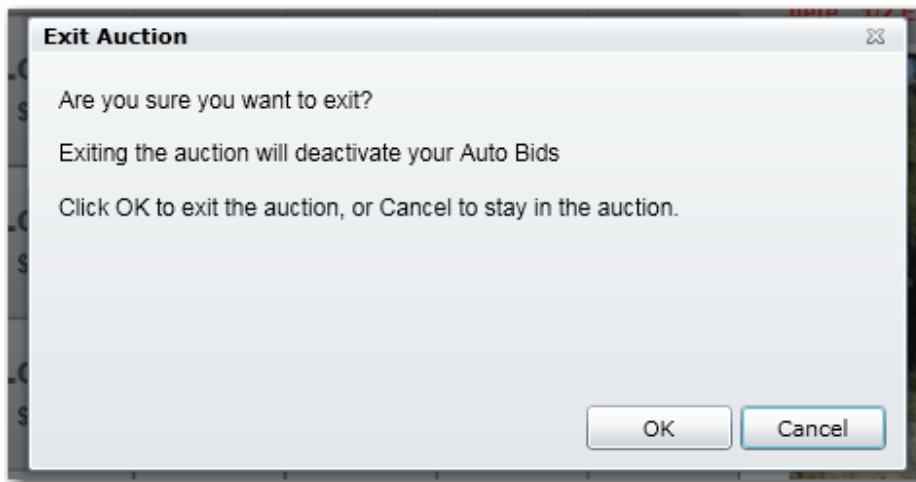
Click on the **Keep Limit Bid** check box to toggle it off and on to indicate which Limit Bids you wish to keep. If the checkbox has a tick, it means that the Limit Bid will be kept active after you exit an Auction. To save your Limit Bids settings, click on the **Save and Exit** button. To return to the Auction, click on the **Stay in Auction** button.

## Auto Bids

Auto Bids can be placed on any Lot in the Auction and can be placed while the Auction is Active.

It is important to remember that in a Simultaneous Auction, Auto Bids are only accepted at the current Bid Increment for each Lot. As a result, the computer may not Bid to your maximum price if it is not a multiple of the current Bid Increment.

**All Auto Bids are immediately deactivated if you exit an Auction.** If you do attempt to exit an Auction with Auto Bids in place, you will receive a reminder message.



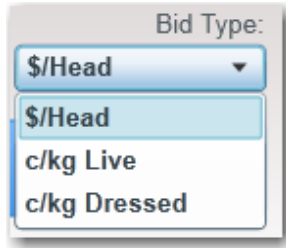
## Entering an Auto Bid

In the Auction Area, click on the **Lot Number** that you wish to place an Auto Bid on.



This Lot now becomes your Active Lot in the Bidding and Lot Information Areas.

If the Lot is offered with multiple Bid Types, the Bid Type can be changed by clicking on the drop-down box under Bid Type.



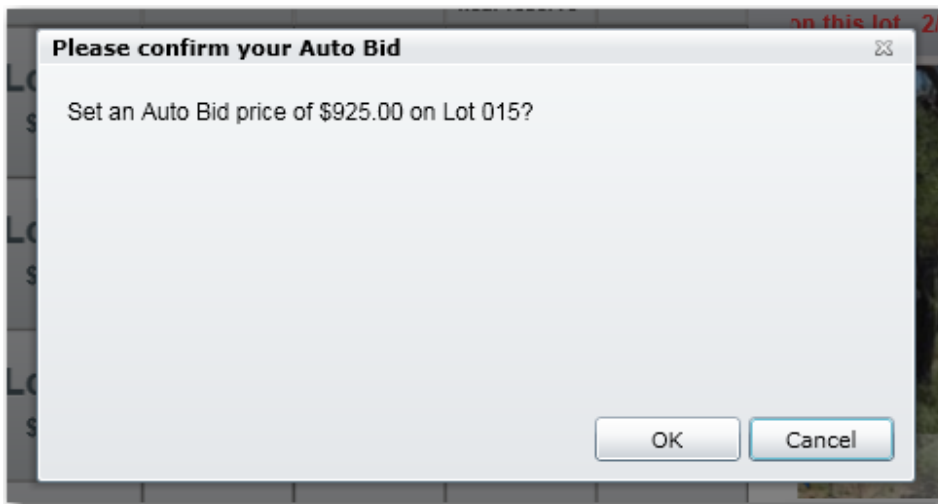
In the Bidding Area, type your maximum price in the Auto Bid box. Ensure that the price you enter is for the selected Bid Type.



Then click on the **Accept** button. A confirmation screen will then be displayed.

To accept the Auto Bid price, click on the **OK** button.

To avoid entering the Auto Bid, click on the **Cancel** button.



Your Auto Bid limit will now be shown under the Bid Buttons in the Bidding Area.

**Lot 015** Increment \$5.00/Head

Current Price **Your bid** Bid Type:

**\$805.00** \$/Head

**Bid x 1** \$810.00 **Bid x 2** \$815.00 **Bid x 5** \$830.00

Auto bid: **\$925.00** Cancel

A summary of all your active Auto Bids can also be found by hovering over the highlighted Auto Bids link in the Message Area. Any Auto Bids will remain active until the limit is reached, the Lot is finalised or the Auto Bid is cancelled by you. If all of your entered Auto Bids become inactive, the Auto Bids link will flash red for a few seconds.

[Auto Bids](#) [Bid Summary](#)

Your Auto Bids:

Lot 015: \$925.00  
 Lot 023: 180.0L (\$900.00 equivalent)

### Cancelling an Auto Bid

To cancel an Auto Bid click on the **Lot Number** in the Auction Area. Go to the Bidding Area and then click on the **Cancel** button. The Auto Bid will be cancelled immediately.

**Lot 015** Increment \$5.00/Head

Current Price **Your bid** Bid Type:

**\$805.00** \$/Head

**Bid x 1** \$810.00 **Bid x 2** \$815.00 **Bid x 5** \$830.00

Auto bid: \$925.00 **Cancel**